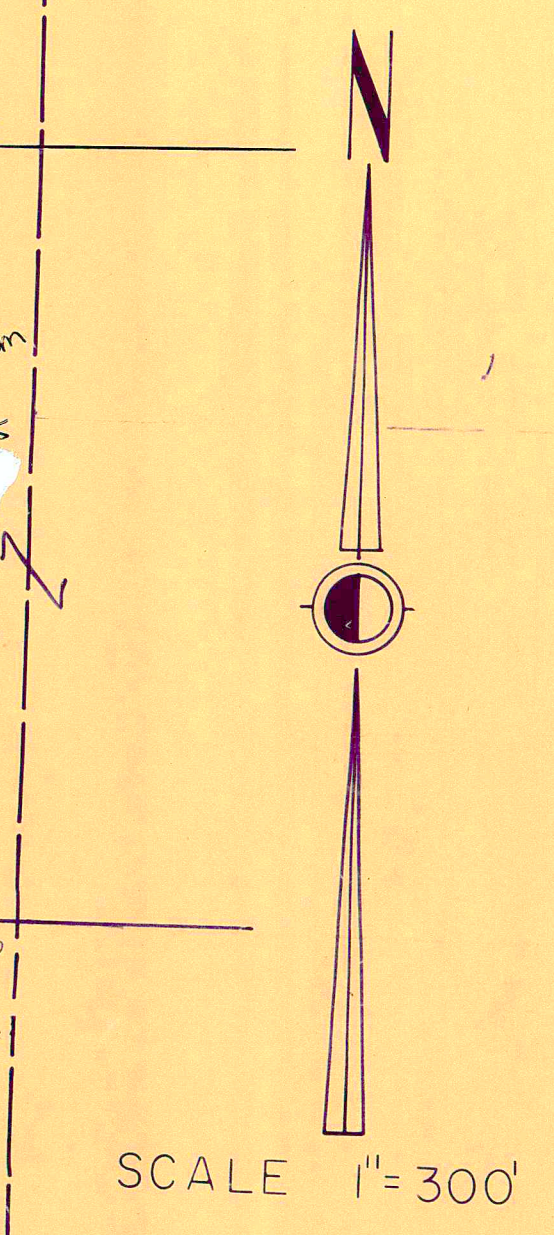




# L A K E C O N C O R D T W P. C O U N T Y

L A K E R T L A N D C O U N T Y I L L.



JANUARY 1 1996  
CHARDON TWP 'A'

A	B	C	D
E	F	G	H
I	J	K	L
M	N	O	P

RELATIVE REPRESENTATION  
✓ indicates survey on file with tax map dept.

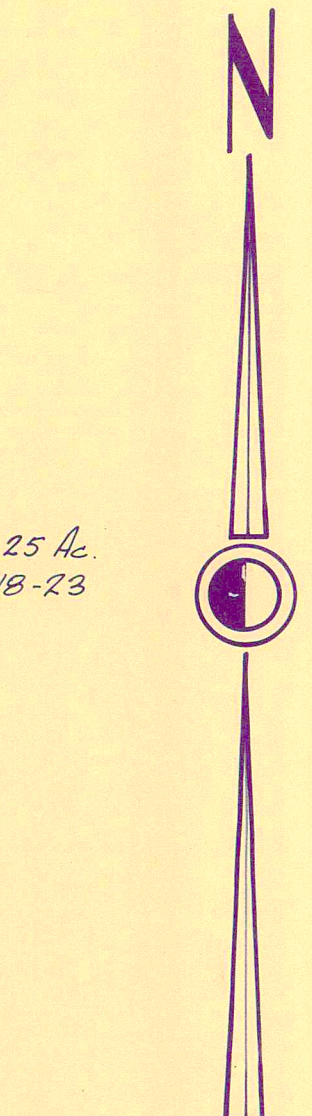
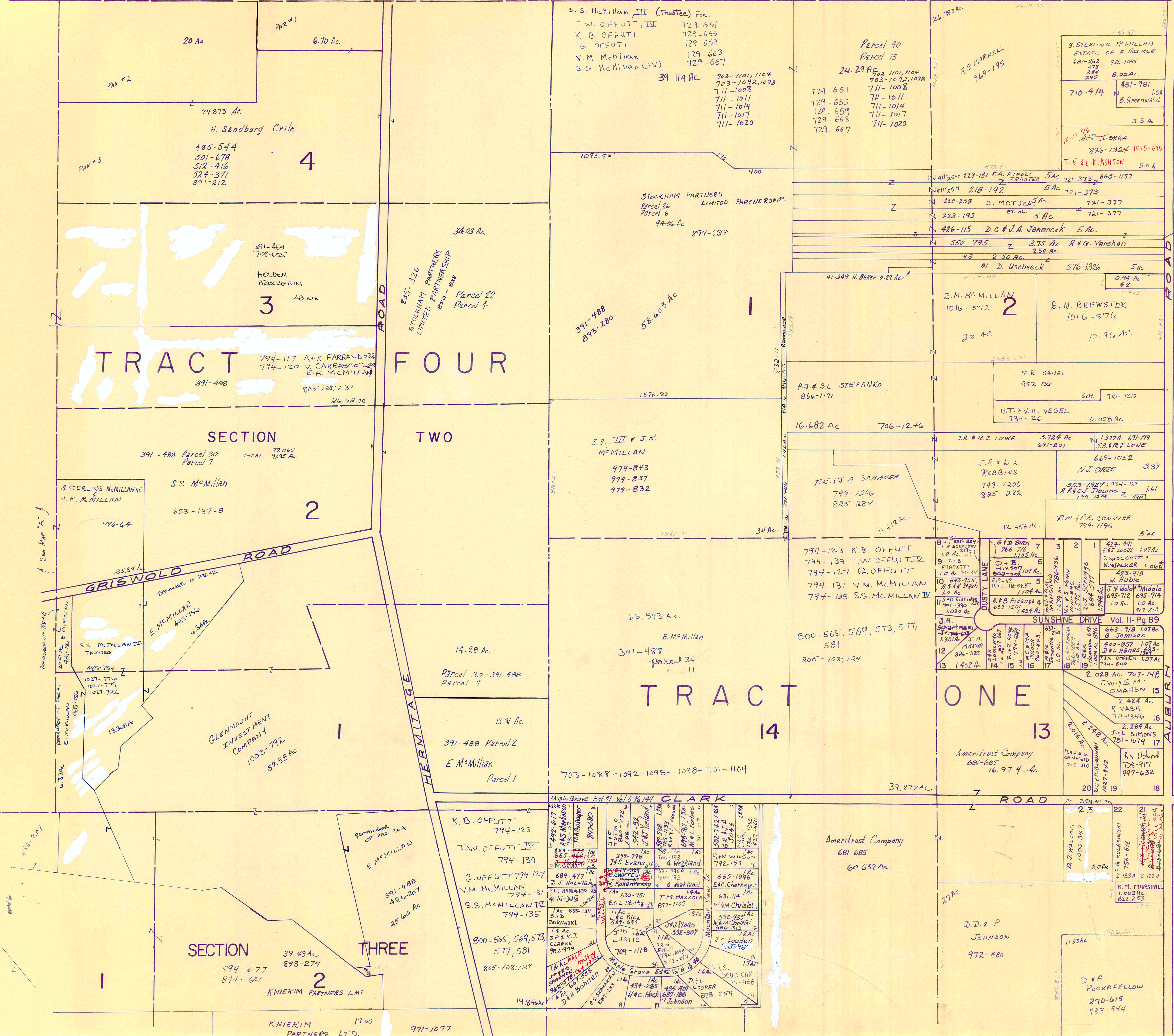
SEE PAGE B  
39.43 AC  
893-274  
894-677  
857-681  
713.34

LAKE

GIRDLED RD.

CONCORD TOWNSHIP

COUNTY



SCALE 1" = 300'  
JAN. 1, 1996

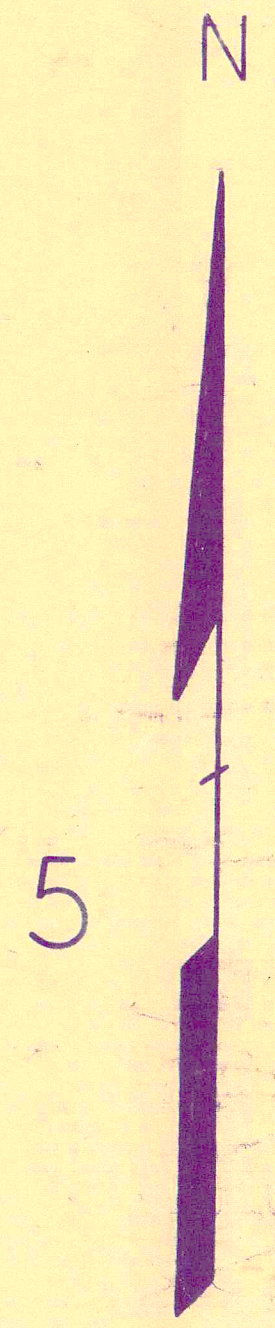
CHARDON TWP "B"

A	B	C	D
E	F	G	H
I	J	K	L
M	N	O	P

RELATIVE REPRESENTATION

\* Inadequate description  
✓ indicates survey on file w/ tax map dept.

L A K E C O U N T Y



SCALE 1"=300'

JAN. 1, 1996

A	B	C	D
E	F	G	H
I	J	K	L
M	N	O	P

RELATIVE REPRESENTATION  
CHARDON TWP.

\* Inadequate description  
✓ indicates survey on file with tax map dept.

SEE PAGE D

14-70  
Estate of  
F.H. Hosmer  
Sub Divisions No. 1

3

12

10

WILLIAM PRESLEY  
WALTER PRESLEY  
816 12.80 12.84  
200-206

J.B. DEWEY, JR.  
840-1042 815-1153  
49.93 A  
1063-20  
87-96

140.77 Ac.  
(48.99 Ac. - CHAR TWP. CHARDON SCHOOLS)  
(91.78 Ac. - CHAR TWP. CHARDON SCHOOLS)

M.L. Rickard  
57-455  
9 Ac.

M.L. Rickard  
788-64  
788-62  
1073-449  
1037-219  
4300 Ac.

D.L. & P. BICKEL FAMILY TRUST  
C.A. BICKEL

TRACT

50A TOTAL

12.352 Ac.

12.352 Ac.

10.679 Ac.

WR & MM. NELLS  
917-702

A. Campone  
599-87

10.257 Ac.

A. Campone  
601-277

J.K. & C.R. HONG  
740-1236

A.G. CAMPANE  
611-476

6.611 Ac.

423-787

M.D. NOLAN  
2.0035 Ac.  
812-822 to  
828

L. & J. RASTALL  
769-356

10.667 Ac.

6.874-884

6.555 Ac.

6.555 Ac.

6.555 Ac.

C. PATTERSEN  
10.679 Ac.  
809-61

10.667 Ac.

10.667 Ac.

10.667 Ac.

10.667 Ac.

10.667 Ac.

10.667 Ac.

10.667 Ac.

10.667 Ac.

10.667 Ac.

10.667 Ac.

10.667 Ac.

10.667 Ac.

10.667 Ac.

10.667 Ac.

10.667 Ac.

10.667 Ac.

10.667 Ac.

10.667 Ac.

10.667 Ac.

10.667 Ac.

10.667 Ac.

10.667 Ac.

10.667 Ac.

10.667 Ac.

10.667 Ac.

10.667 Ac.

10.667 Ac.

10.667 Ac.

10.667 Ac.

10.667 Ac.

10.667 Ac.

10.667 Ac.

10.667 Ac.

10.667 Ac.

10.667 Ac.

10.667 Ac.

10.667 Ac.

10.667 Ac.

10.667 Ac.

10.667 Ac.

10.667 Ac.

10.667 Ac.

10.667 Ac.

10.667 Ac.

10.667 Ac.

10.667 Ac.

10.667 Ac.

10.667 Ac.

10.667 Ac.

10.667 Ac.

10.667 Ac.

10.667 Ac.

10.667 Ac.

10.667 Ac.

10.667 Ac.

10.667 Ac.

10.667 Ac.

10.667 Ac.

10.667 Ac.

10.667 Ac.

10.667 Ac.

10.667 Ac.

10.667 Ac.

10.667 Ac.

10.667 Ac.

10.667 Ac.

10.667 Ac.

10.667 Ac.

10.667 Ac.

10.667 Ac.

10.667 Ac.

10.667 Ac.

10.667 Ac.

10.667 Ac.

10.667 Ac.

10.667 Ac.

10.667 Ac.

10.667 Ac.

10.667 Ac.

10.667 Ac.

10.667 Ac.

10.667 Ac.

10.667 Ac.

10.667 Ac.

10.667 Ac.

10.667 Ac.

10.667 Ac.

10.667 Ac.

10.667 Ac.

10.667 Ac.

10.667 Ac.

10.667 Ac.

10.667 Ac.

10.667 Ac.

10.667 Ac.

10.667 Ac.

10.667 Ac.

10.667 Ac.

10.667 Ac.

10.667 Ac.

10.667 Ac.

10.667 Ac.

10.667 Ac.

10.667 Ac.

10.667 Ac.

10.667 Ac.

10.667 Ac.

10.667 Ac.

10.667 Ac.

10.667 Ac.

10.667 Ac.

10.667 Ac.

10.667 Ac.

10.667 Ac.

10.667 Ac.

10.667 Ac.

10.667 Ac.

10.667 Ac.

10.667 Ac.

10.667 Ac.

10.667 Ac.

10.667 Ac.

10.667 Ac.

10.667 Ac.

10.667 Ac.

10.667 Ac.

10.667 Ac.

10.667 Ac.

10.667 Ac.

10.667 Ac.

10.667 Ac.

10.667 Ac.

10.667 Ac.

10.667 Ac.

10.667 Ac.

10.667 Ac.

10.667 Ac.

10.667 Ac.

10.667 Ac.

10.667 Ac.

10.667 Ac.

10.667 Ac.

10.667 Ac.

10.667 Ac.

10.667 Ac.

10.667 Ac.

10.667 Ac.

10.667 Ac.

10.667 Ac.

10.667 Ac.

10.667 Ac.

10.667 Ac.

10.667 Ac.

10.667 Ac.

10.667 Ac.

10.667 Ac.

10.667 Ac.

10.667 Ac.

10.667 Ac.

10.667 Ac.

10.667 Ac.

10.667 Ac.

10.667 Ac.

10.667 Ac.

10.667 Ac.

10.667 Ac.

10.667 Ac.

10.667 Ac.

10.667 Ac.

10.667 Ac.

10.667 Ac.

10.667 Ac.

10.667 Ac.

10.667 Ac.

10.667 Ac.

10.667 Ac.

10.667 Ac.

10.667 Ac.

10.667 Ac.

10.667 Ac.

10.667 Ac.

10.667 Ac.

10.667 Ac.

10.667 Ac.

10.667 Ac.

10.667 Ac.

10.667 Ac.

10.667 Ac.

10.667 Ac.

10.667 Ac.

10.667 Ac.

10.667 Ac.

10.667 Ac.

10.667 Ac.

10.667 Ac.

10.667 Ac.

10.667 Ac.

10.667 Ac.

10.667 Ac.

10.667 Ac.

10.667 Ac.

10.667 Ac.

10.667 Ac.

10.667 Ac.

10.667 Ac.

10.667 Ac.

10.667 Ac.

10.667 Ac.

10.667 Ac.

10.667 Ac.

10.667 Ac.

10.667 Ac.

10.667 Ac.

10.667 Ac.

10.667 Ac.

10.667 Ac.

10.667 Ac.

10.667 Ac.

10.667 Ac.

10.667 Ac.

10.667 Ac.

10.667 Ac.

10.667 Ac.

10.667 Ac.

10.667 Ac.

10.667 Ac.

10.667 Ac.

10.667 Ac.

10.667 Ac.

10.667 Ac.

10.667 Ac.

10.667 Ac.

10.667 Ac.

10.667 Ac.

10.667 Ac.

10.667 Ac.

10.667 Ac.

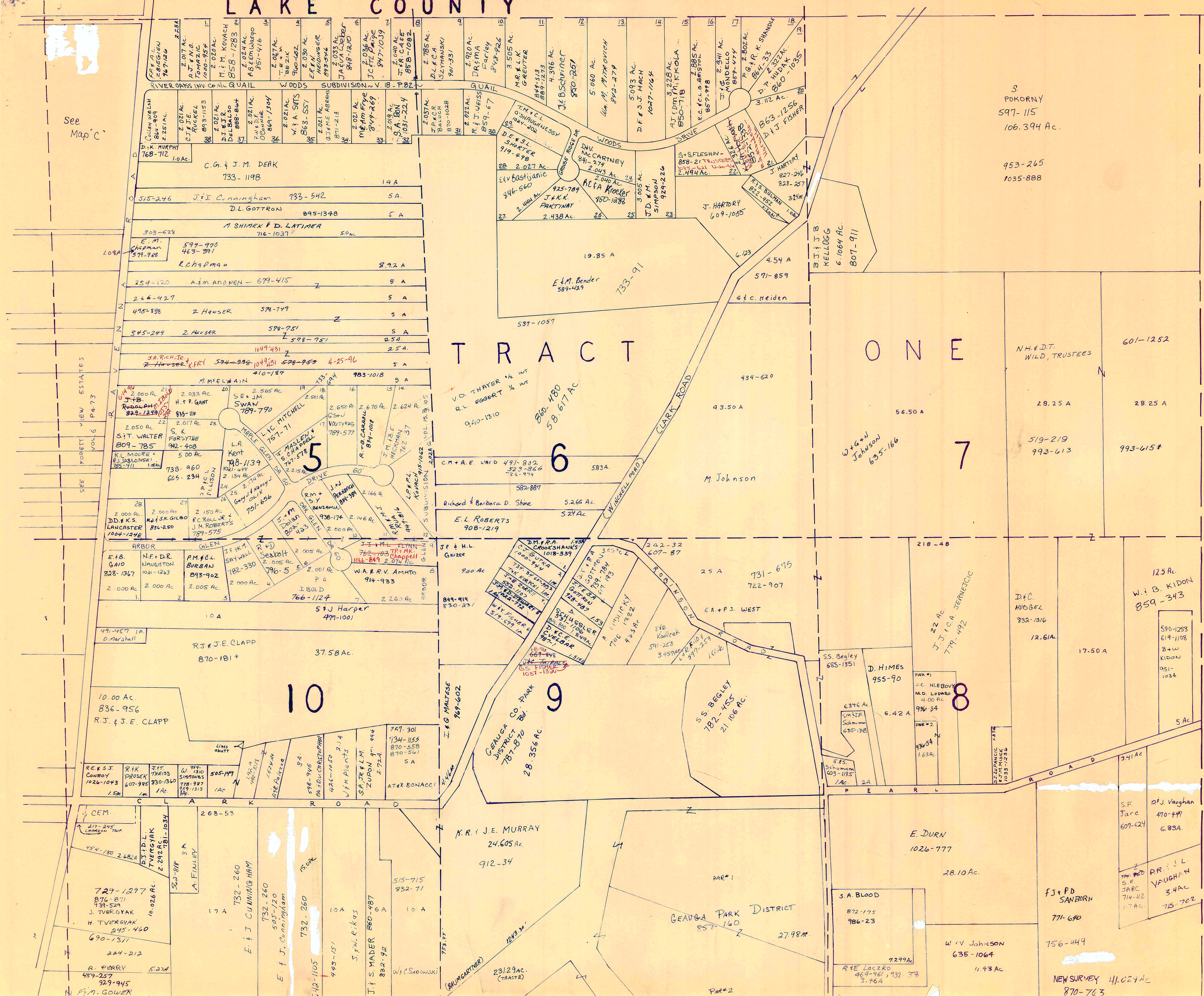
10.667 Ac.

10.667 Ac.

10.667 Ac.

</

# LAKE COUNTY



See Map 'c'

3.  
POKORNY  
597-115  
106.394 Ac.  
  
953-265  
1035-888

## TRACT ONE

H A M B L E N D E N T O W N S H I P



SCALE 1"=300'

A	B	C	D
E	F	G	H
I	J	K	L
M	N	O	P

CHARDON TWP. "D"

JANUARY 1, 1996  
RELATIVE REPRESENTATION  
\* Inadequate description indicates survey on file with tax map dept.

C.G. & J.M. DEAK  
733-1198

J.I. Cunningham  
733-542

D.L. GOTTRON  
895-1348

M. SHIMEK & D. LATIMER  
716-1037

E.M. Chapman  
599-990  
463-391

R Chapman

A.M. ANONEN - 579-415

Z. Huser  
578-749

578-751

574-992  
1049-81  
528-952  
4-25-96

M. MSELMAIN  
410-187

H.T.P. GANT  
895-111

L.A. MITCHELL  
757-71

L.A. MASLEY  
747-578

L.A. KENT  
708-1139

J.M. ROBERTS  
789-575

S.J. HARPER  
477-1001

R.J. & J.E. CLAPP  
870-181\*

37.58 AC.

R.J. & J.E. CLAPP  
836-956

10.00 AC.

R.K. PROSEK  
607-985

J.T. THREISS  
830-1360

W. SIMONIS  
778-997

505-147

729-1297  
876-871  
934-524

J. TVERGYAK  
845-460

690-1311

244-212

R. PERRY  
459-257  
929-945

F.M. GOWER

732-260  
509-120

E.J. Cunningham

732-260

542-1105

483-151

S.W. R. K. 45

J. S. MADER  
860-487  
882-92

W. C. Sabowski

515-715  
832-71

K.R. J.E. MURRAY  
24,605 Ac.  
912-34

E. DURN  
1026-777

28.10 Ac.

S.A. BLOOD  
872-175  
986-23

W.V. Johnson  
635-1064

11.93 Ac.

F.J. & P.D. SANBORN  
771-690

756-449

NEW SURVEY 41,024 Ac.  
870-763

W.D. THAYER 1/2 INT  
R.L. ROBERT 1/2 INT  
940-1310

860-480  
58-617 AC

5834

M. Johnson

Richard & Barbara D. Shine  
5266 AL  
524 AC

E.L. ROBERTS  
908-219

J.P. & H.L. GRUZZER  
900 AC

849-914  
830-231

242-32  
607-87

25 A  
731-675  
722-907

EA & P.J. WEST

218-48

125 AC  
W.B. KIDON  
859-343

580-1253  
619-1108  
844  
KIDON  
951-1034

17.50 A

D.C. HUDGEL  
832-1316

12.61 AC

22 AC  
J.J. & C.A. JERNESIC  
779-492

8346 AC  
S.M. SHER  
Schumm  
685-1308

6.42 A

936-54

836-54  
1.63 AC

5 AC

55. BEGLEY  
782-455  
21,106 AC.

SS. BEGLEY  
685-1351

D. HIMES  
955-90

6.42 A

PAR #1  
J.C. HLEBOV  
M.D. LOVARD  
4.00 AC

936-54

PAR #2

836-54  
1.63 AC

5 AC

W. J. VAUGHAN  
470-447  
6.83A

PR. J.L. VAUGHAN  
3.4 AC  
715-702

GEAUGA PARK DISTRICT

857-160

27.98 AC.

PAR #1

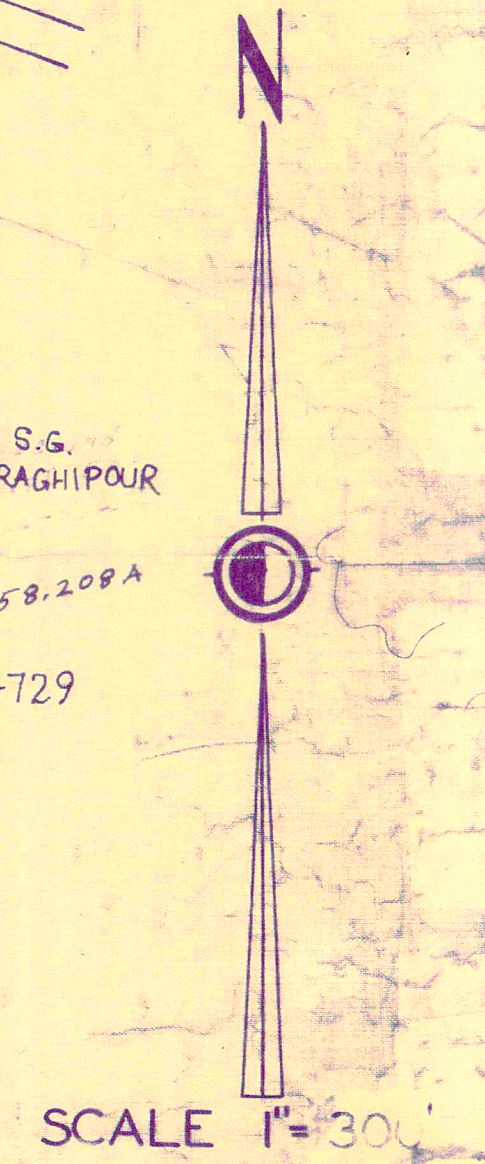
PAR #2

23129 AC.  
(TRACTS)

7299 AC

R.E. Laczko  
469-961, 132 3/8  
3.76 A

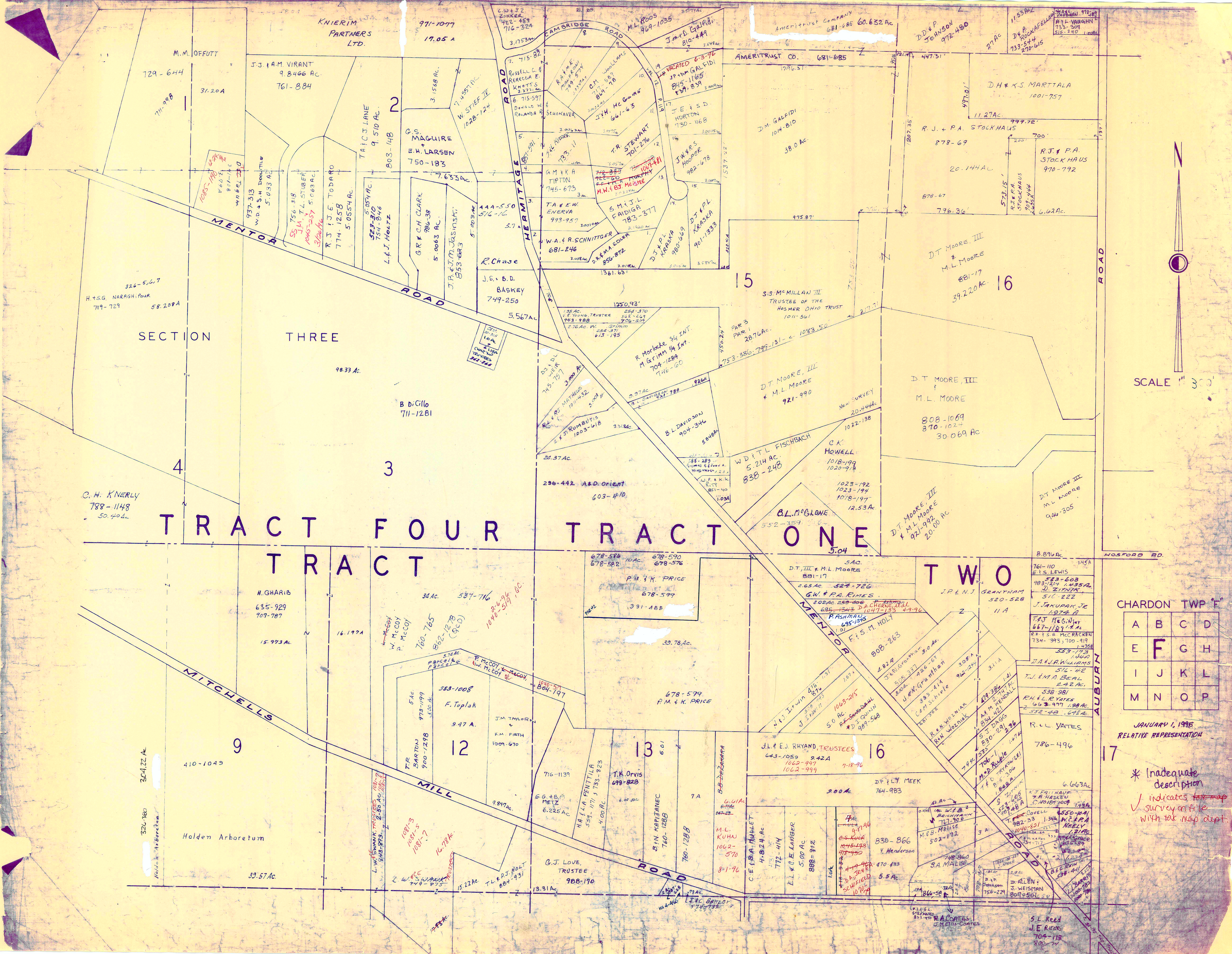
KIRTLAND HILLS  
CO  
KIRTLAND TWP  
TRACT  
TRACT



JANUARY 1, 1996  
RELATIVE REPRESENTATION  
CHARDON TWP 'E'

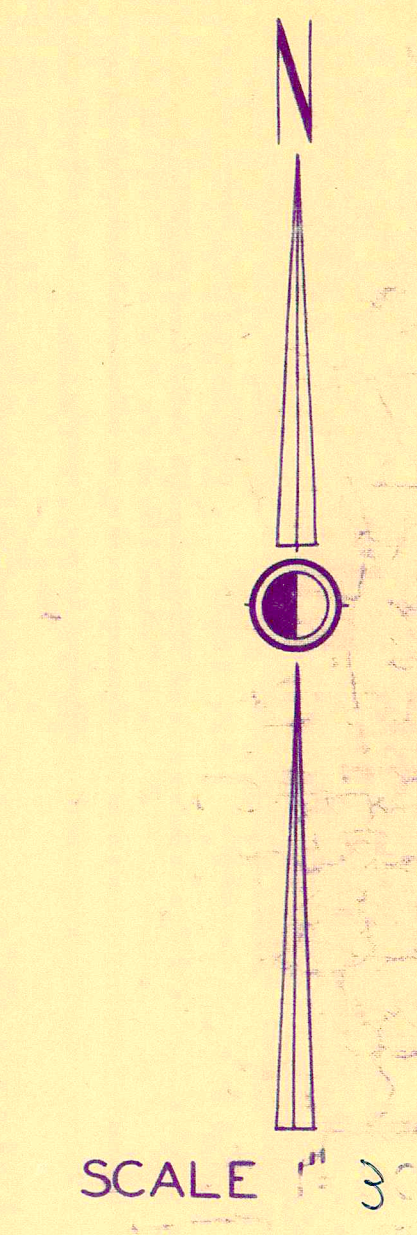
A	B	C	D
E	F	G	H
I	J	K	L
M	N	O	P

\* Inadequate description  
/ indicates survey on file with tax map dept



SECTION THREE

TRACT FOUR TRACT ONE TRACT TWO



CHARDON TWP T

A	B	C	D
E	F	G	H
I	J	K	L
M	N	O	P

JANUARY 1, 1996  
RELATIVE REPRESENTATION

\* Inadequate description  
✓ indicates survey on file with tax map dept.

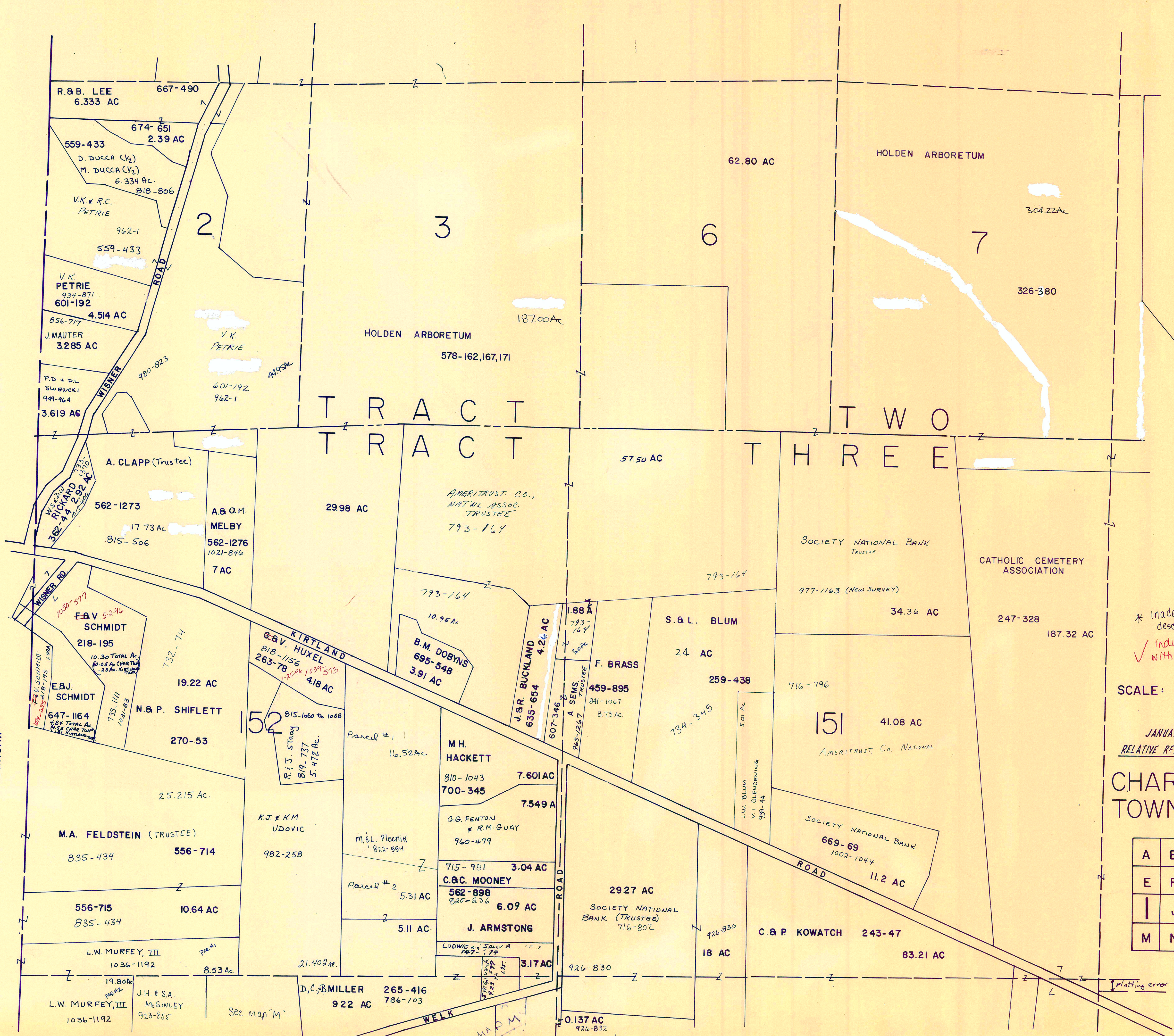




COUNTY

LAKE

KIRTLAND TOWNSHIP



\* Inadequate description  
 ✓ indicates survey on file with tax map dept.

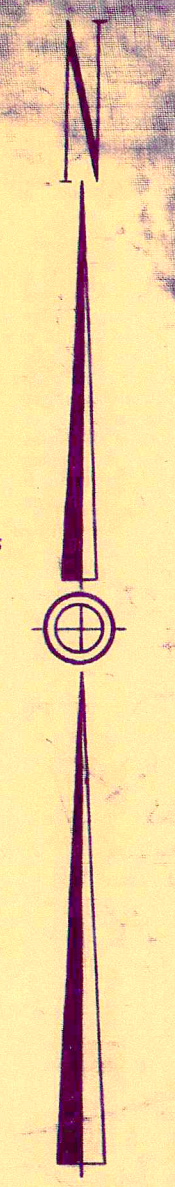
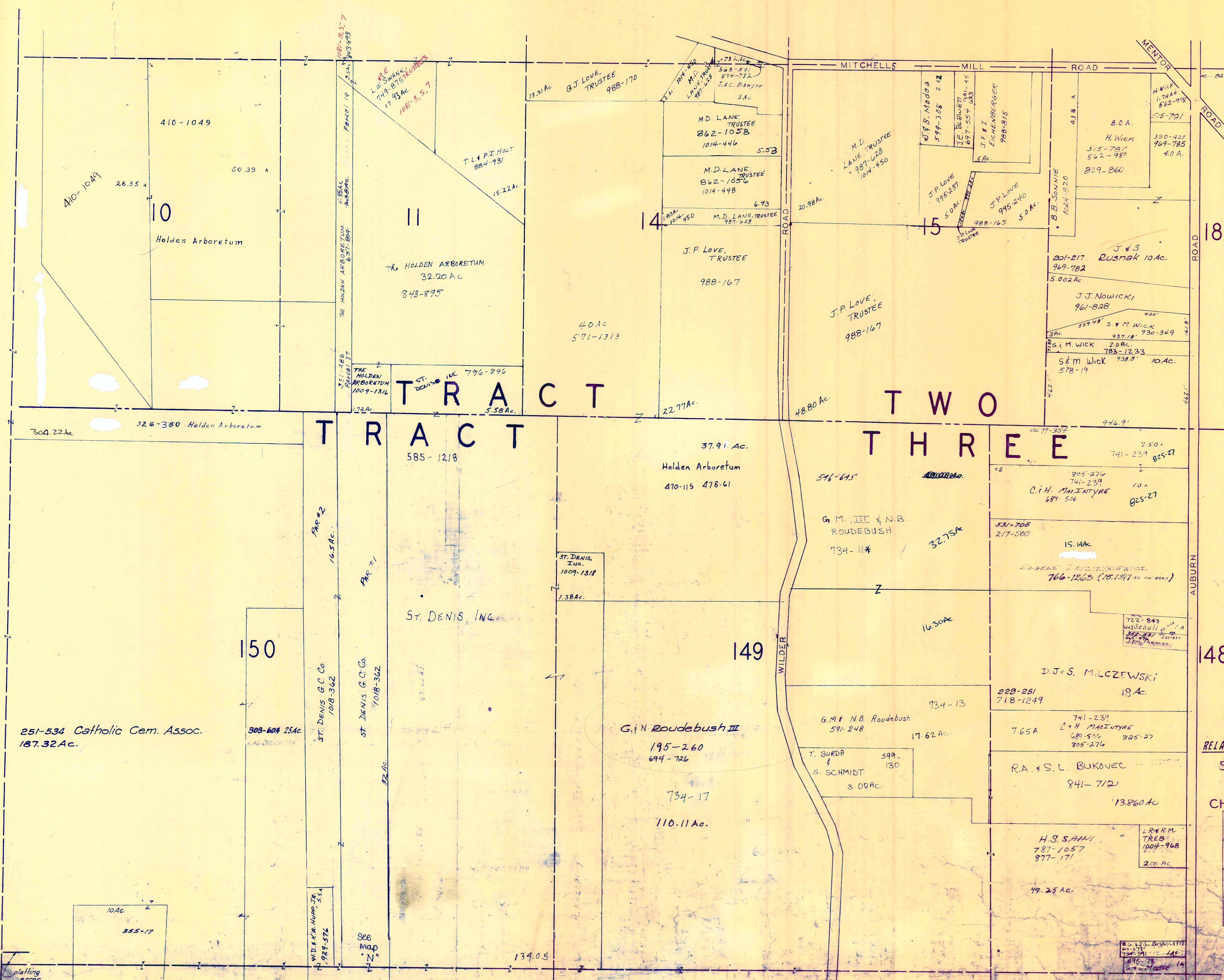
SCALE: 1" = 300'

JANUARY 1, 1996  
 RELATIVE REPRESENTATION

CHARDON TOWNSHIP "1"

A	B	C	D
E	F	G	H
I	J	K	L
M	N	O	P

Plotting error



✓ indicates survey on file with tax map dept.

\* Inadequate description

JANUARY 1, 1996  
RELATIVE REPRESENTATION

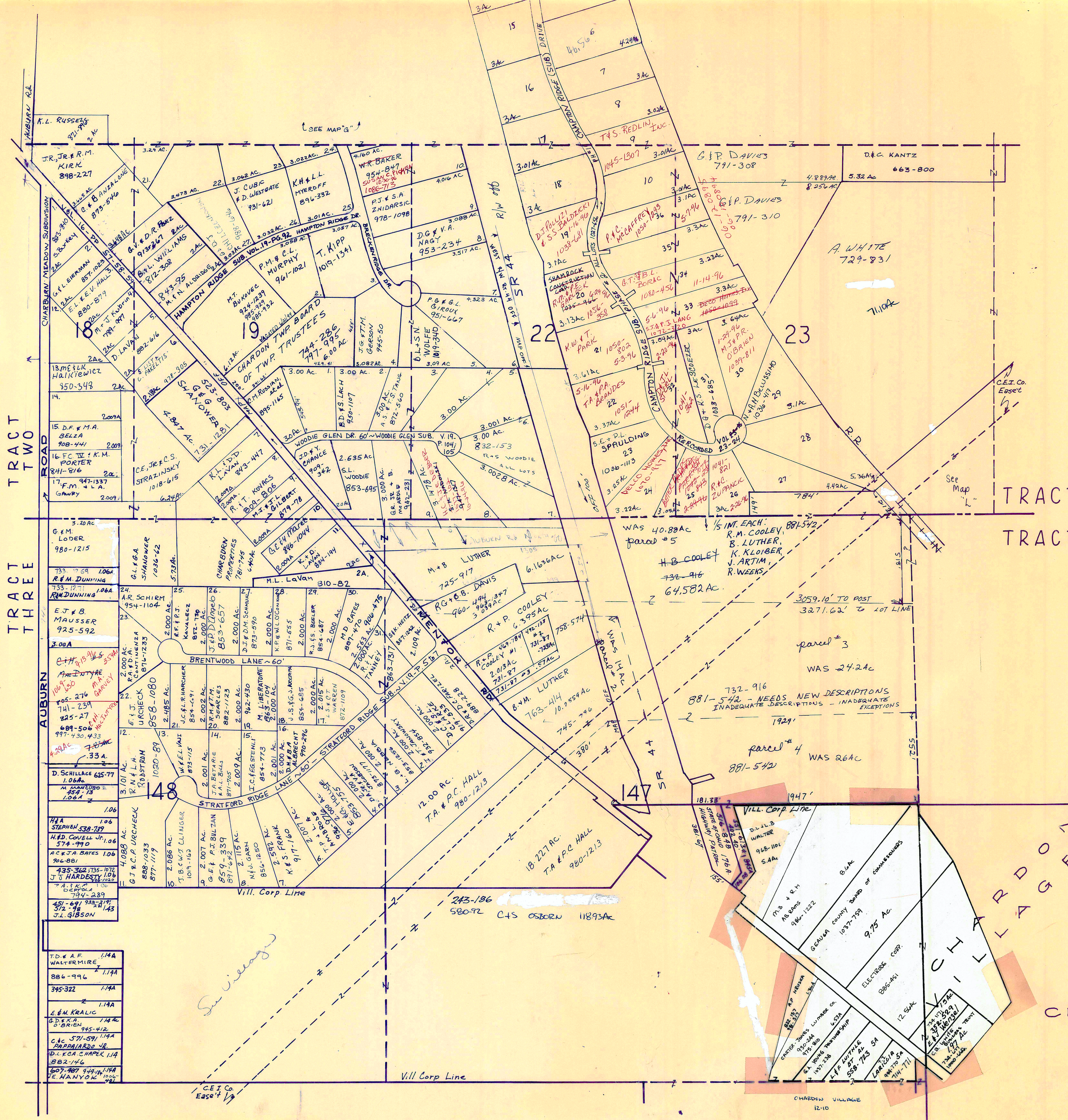
SCALE 1" = 300'

CHARDON TWP. - J

A	B	C	D
E	F	G	H
I	J	K	L
M	N	O	P

SEE MAP N

plotting error



SCALE 1 IN = 300 FT.

TRACT TWO  
TRACT THREE

CHARDON TWP-K

A	B	C	D
E	F	G	H
I	J	K	L
M	N	O	P

JANUARY 1, 1996  
RELATIVE REPRESENTATION

\* Inadequate description  
✓ indicates survey on file with tax map dept.

- K.L. RUSSELL 871-99
- J.R. JR. & R.M. KIRK 898-227
- G.L. BERMAN 857-1023
- E.L. KEV. HALL 800-877
- M.F. J. KROHN 882-616
- D. LAVA 882-616
- 13. MELIK HALIKIEWICZ 950-348
- 15. D.F. & M.A. BELZA 908-441
- 16. F.C. II & K.M. PORTER 841-816
- 17. F.M. GAWRY 947-1337
- 18. G.L. & B. SHAWNER 1036-12
- 19. R.M. DUNNING 1064
- 20. R.M. DUNNING 1064
- 21. E.J. & B. MAUSSER 925-592
- 22. C.H. & P. B. GARDNER 104-276
- 23. F.T. URCHICK 858-1080
- 24. D. SCHILLAGE 625-77
- 25. M. HANCOCK 854-118
- 26. H.A. STEPHEN 538-799
- 27. H.D. COVELL JR. 574-990
- 28. A.C. & J.A. BATES 106
- 29. J.S. HARDSOPE 106
- 30. J.L. GIBSON 574-289
- 31. T.D. & A.F. WALTERMIRE 114A
- 32. E.M. KRALIC 114A
- 33. G.D. & K.A. O'BRIEN 114A
- 34. C.A. 571-591 114A
- 35. B.P. & A.R. JR. 114A
- 36. D.L. & C.A. CHAPK 114A
- 37. 507-807 114A
- 38. T.E. HANNY 1006
- 39. J.L. GIBSON 497
- 40. J.C. & P. URCHICK 888-1033
- 41. T.B. & W.T. LLINGER 1074-103
- 42. G.E. & P.J. BULZAN 859-339
- 43. M.F. GARN 856-1250
- 44. K.S. FRANK 917-100
- 45. J.C. & P. URCHICK 888-1033
- 46. T.B. & W.T. LLINGER 1074-103
- 47. G.E. & P.J. BULZAN 859-339
- 48. M.F. GARN 856-1250
- 49. K.S. FRANK 917-100
- 50. J.C. & P. URCHICK 888-1033
- 51. T.B. & W.T. LLINGER 1074-103
- 52. G.E. & P.J. BULZAN 859-339
- 53. M.F. GARN 856-1250
- 54. K.S. FRANK 917-100
- 55. J.C. & P. URCHICK 888-1033
- 56. T.B. & W.T. LLINGER 1074-103
- 57. G.E. & P.J. BULZAN 859-339
- 58. M.F. GARN 856-1250
- 59. K.S. FRANK 917-100
- 60. J.C. & P. URCHICK 888-1033

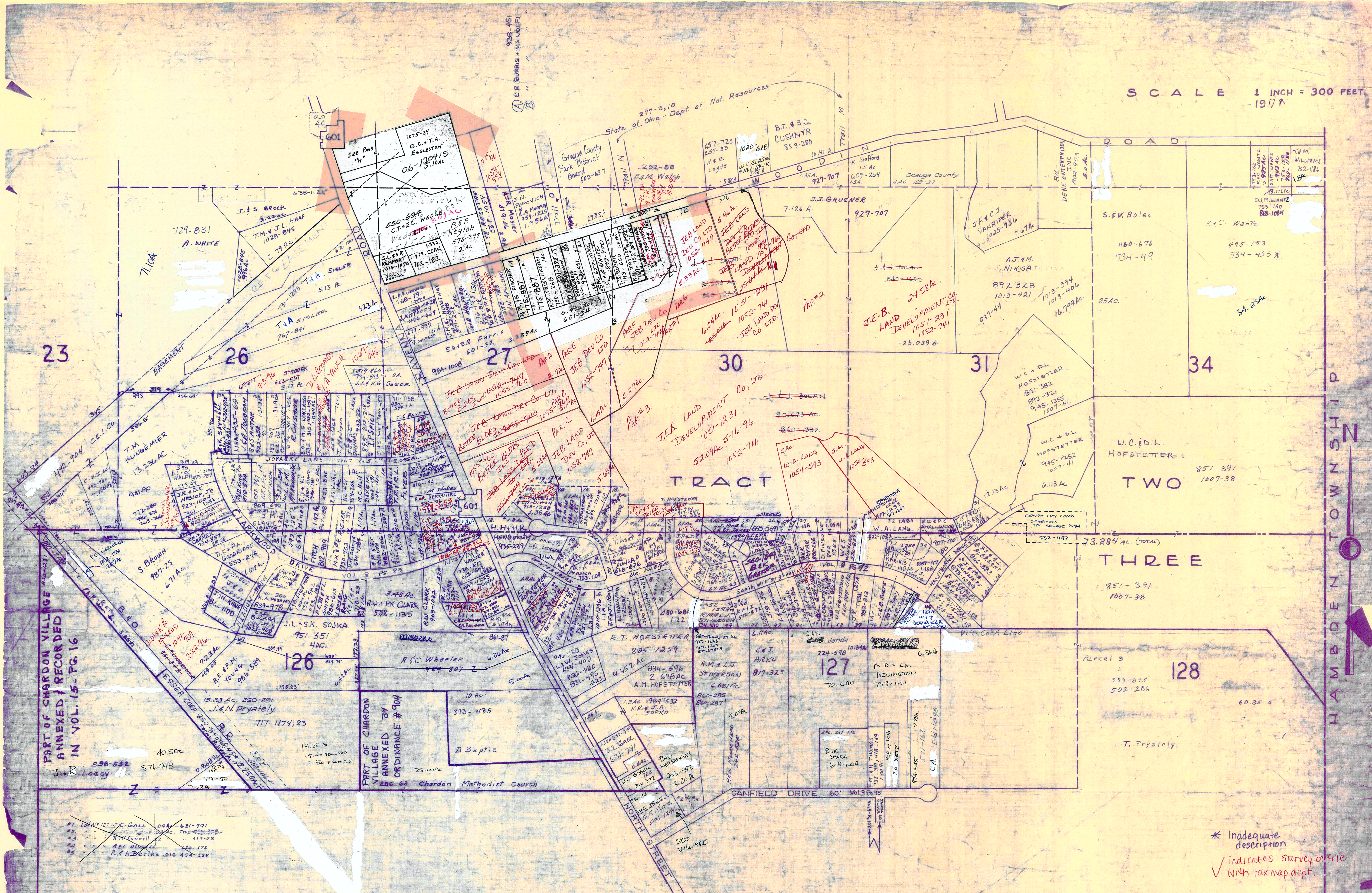
*See Village*

C.E.I. Co. Easement 1/9

Vill Corp Line

CHARDON VILLAGE 12-10

SCALE 1 INCH = 300 FEET  
1978



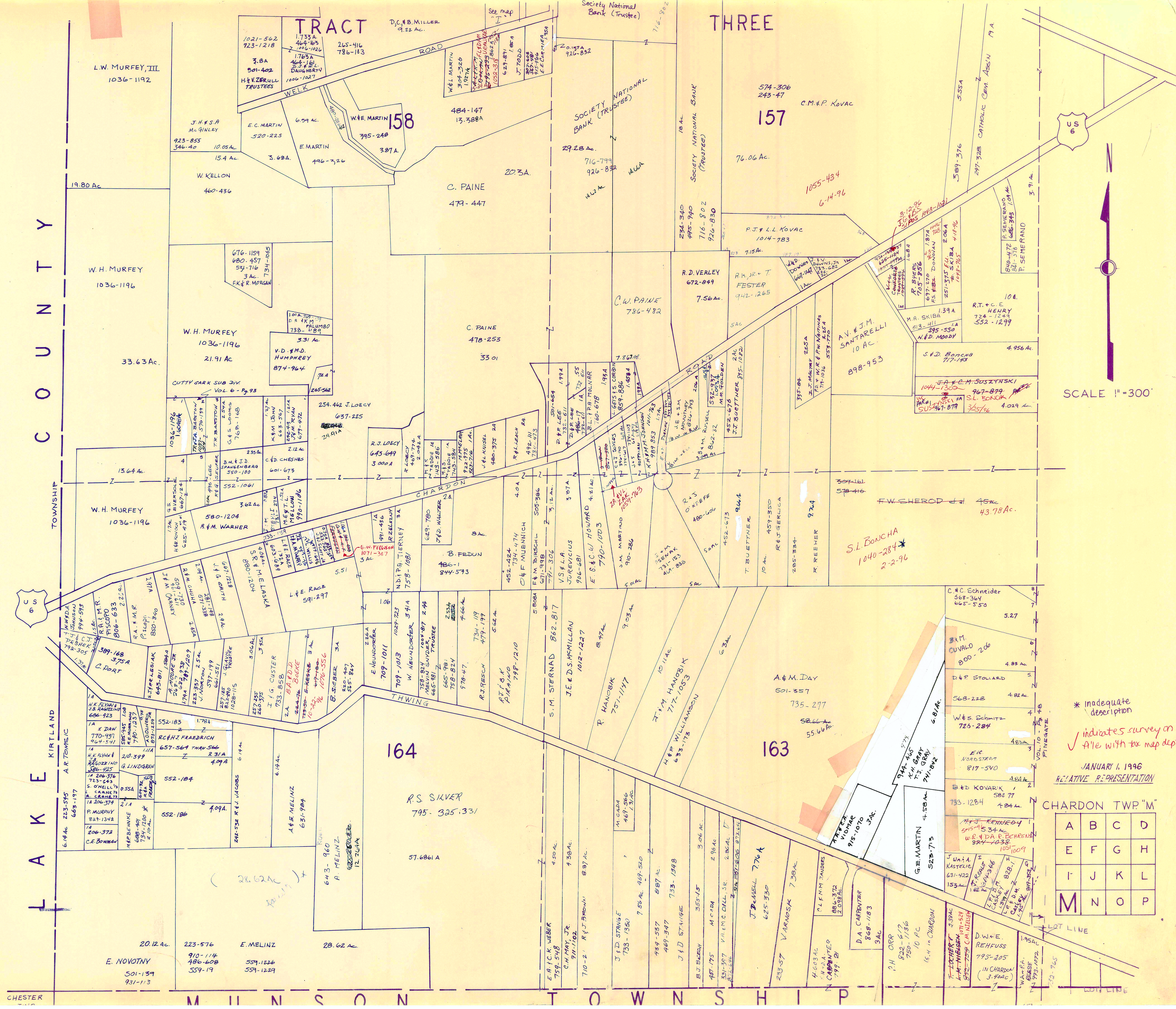
PART OF CHARDON VILLAGE ANNEXED & RECORDED IN VOL. 15 - PG. 16

PART OF CHARDON VILLAGE ANNEXED BY ORDINANCE # 904

\* Inadequate description  
✓ indicates survey of file with tax map dept.

JANUARY 1, 1996  
RELATIVE REPRESENTATION  
CHARDON TWP - L

A	B	C	D
E	F	G	H
I	J	K	L
M	N	O	P



SCALE 1"=300'

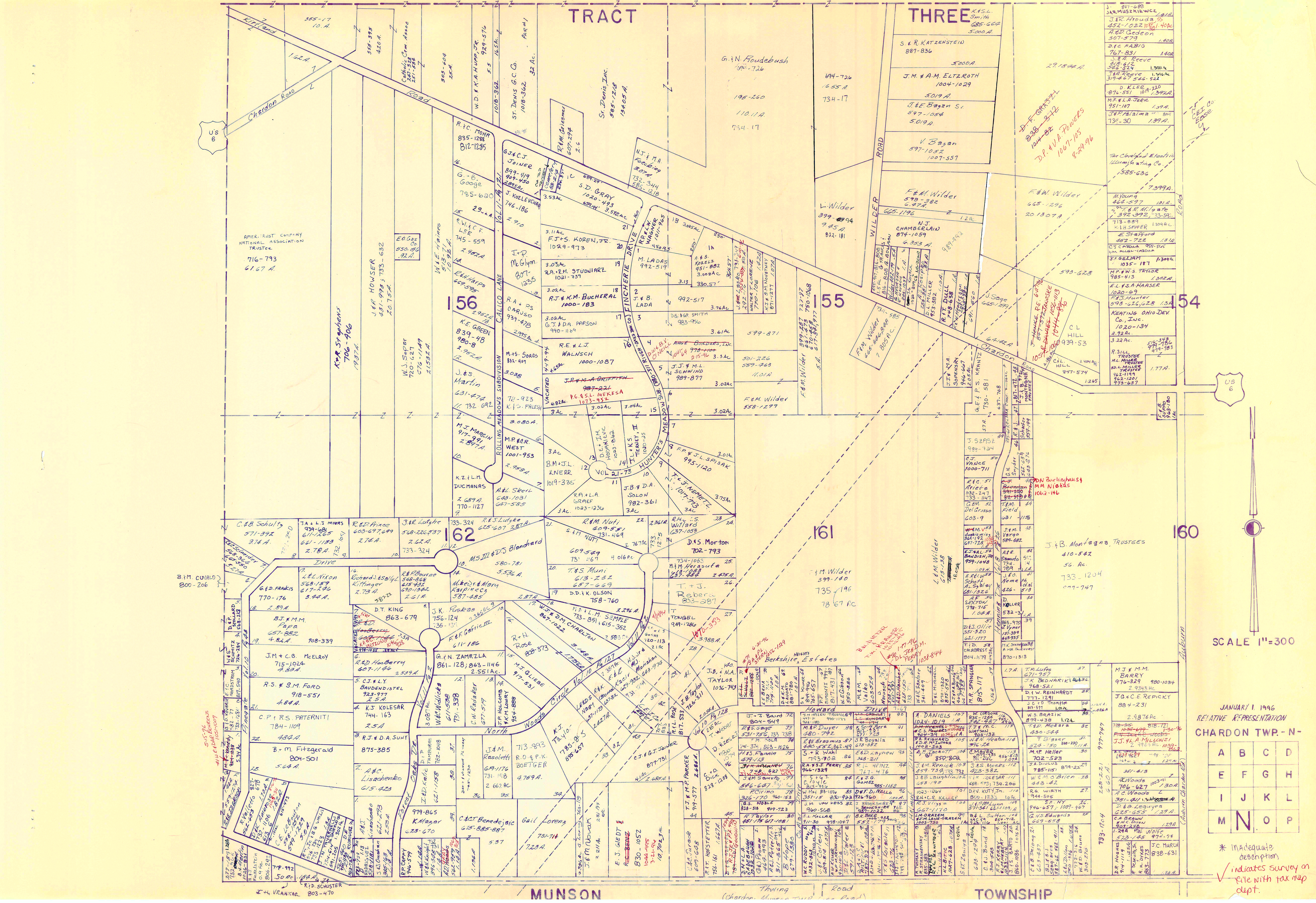
\* inadequate description  
 ✓ indicates survey on file with tax map dept.

JANUARY 1, 1996  
 RELATIVE REPRESENTATION

CHARDON TWP "M"

A	B	C	D
E	F	G	H
I	J	K	L
M	N	O	P

CHESTER TOWNSHIP M U N I C I P A L I T Y T O W N S H I P

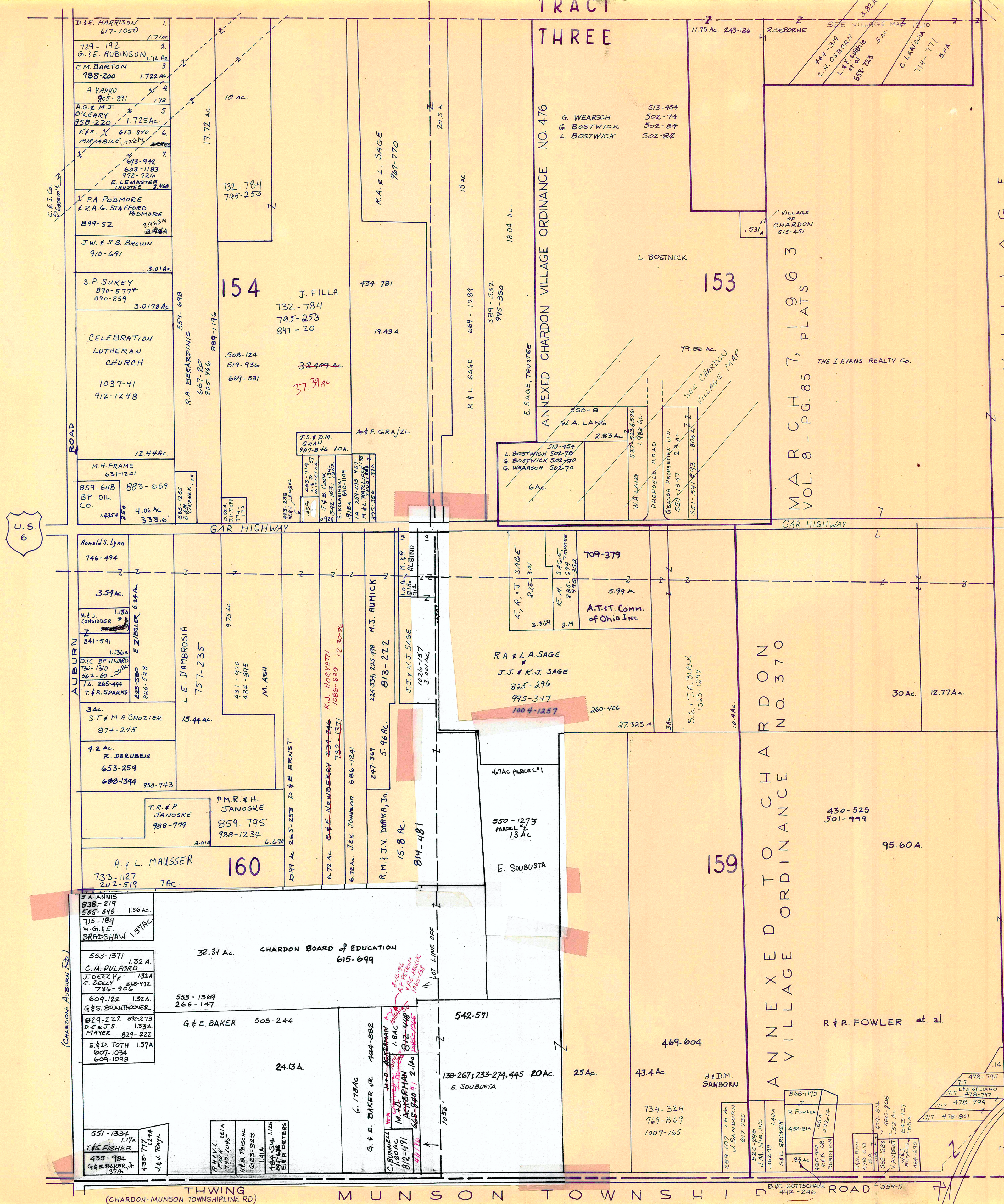


SCALE 1"=300

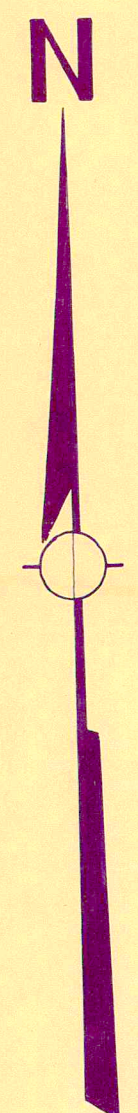
JANUARY 1 1996  
 RELATIVE REPRESENTATION  
 CHARDON TWP. - N -

A	B	C	D
E	F	G	H
I	J	K	L
M	N	O	P

\* Indicates description  
 ✓ indicates survey on file with tax map dept.



CHARDON 1888



SCALE 1 in. = 300 FT

✓ indicates survey on file with tax map dept.

\* Inadequate description

1 JANUARY 1996  
RELATIVE REPRESENTATION

CHARDON TWP. - O -

A	B	C	D
E	F	G	H
I	J	K	L
M	N	O	P